



United Nations
Educational, Scientific and
Cultural Organization



San'in Kaigan
UNESCO
Global Geopark

People's Lives in Sand Dunes

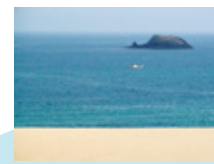
East Tottori Sand Dunes Course

Tottori Sand Dunes have four sand dunes area. Fukube Sand Dunes are located at the most eastern area. Yuyamaike Pond used to be located at the southern part of sand dunes. At the end of Edo period (1603-1868), Yuyamaike Pond was changed into paddy fields by the reclamation. Many remains and Gorinto Pagodas are discovered around the pond, and you can remember the old days when people have fought with wind-blown sand of the sand dunes.



The Fukube Sand Dunes are productive area of shallots. The shallot fields change into a vast, purple fields when the flowers bloom from the end of October to the beginning of November. Before the harvest season of May, the shallot fields turn into a beautiful, vast and green carpet.

Best spot for lunch!



Quiz2
Can you guess the different name of Amoujima island located offshore of Fukube Sand Dunes ?
(Clue: The name of animal)
(The answer is at the back)

San'in Kaigan National Park

Cycling path・Promenade

Fukube Fureai Land

This is a facility with 'Sand Dunes Hot Spring Fureai Kaikan' and 'Hot Swimming Pool'. Enjoy the wonderful view of the Sea of Japan from the bath on the second floor.
•Sand Dunes Hot Spring Fureai Kaikan :
Tel (0857) 75-2316
•Hot Swimming Pool :
Tel (0857) 74-3712

There are many farmland in shallot fields. Please stay out of farmland while walking.

Basic Course

Start	Estimated walking time
①San'in Kaigan National Park Tottori Sand Dunes Visitor Center	5min ↓ About 300m
②Exposure of Volcanic Ash Strata	5min ↓ About 300m
③Tottori Sand Dunes the Sand Museum	5min ↓ About 200m
④Benten-gu Shrine (Tanegaikae Pond)	8min ↓ About 500m
⑤Shallot Fields	20min ↓ About 1.4km
⑥Gorinto Pagodas (A group of five-level stone pagodas)	7min ↓ About 400m
⑦Yanaga Shrine	15min ↓ About 1km
⑧Mt. Hitotsu Sea Cave	30min ↓ About 1.8km
①San'in Kaigan National Park Tottori Sand Dunes Visitor Center	
Total traveling time : 1h35min	
Total distance : About 6 km	



Quiz1

Can you guess what kind of sand are used for sand sculpture?
(The answer is at the back.)

You can enjoy pear-picking!
Middle of August – End of September: 20th Century Pear
End of September - End of October : Akanashi Pear

Shallot Fields Course

Start	Estimated walking time
Oasis	10min ↓ About 600m
Recommend 3	15min ↓ About 800m
Recommend 4	15min ↓ About 1.1km
⑧Mt. Hitotsu Sea Cave	5min ↓ About 300m
Oasis	
Total traveling time : 45min	
Total distance : About 3 km	

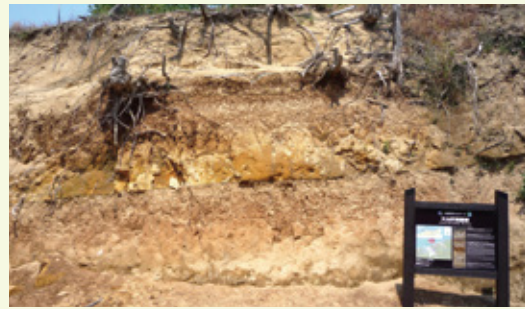
Tottori Sand Dunes' many places of interest

①San'in Kaigan National Park Tottori Sand Dunes Visitor Center



San'in Kaigan National Park Tottori Sand Dunes Visitor Center is located at the east entrance of Tottori Sand Dunes. Visitors can get a lot of information about Tottori Sand Dunes' best things by displays and guide. Please feel a variety of geological and geographical features of active Tottori Sand Dunes with the information you get here.

②Exposure of Volcanic Ash Strata



The stratum of volcanic ashes consists of volcanic ash and volcanic ash soil of Mt. Daisen volcano erupted about 55,000 years ago. Dunes below the volcanic ash stratum are old dunes, while dunes above the volcanic ash stratum are new dunes.

③Tottori Sand Dunes the Sand Museum



Tottori Sand Dunes the Sand Museum is the world's first museum specializing in sand sculptures. The highest level of sculptures in the world are exhibited on a different theme every year, inviting sand sculptors from around the world. It houses tourist information center around Tottori Sand Dunes and local souvenir shops. (TEL) 0857-20-2231

④Benten-gu Shrine (Tanegaike Pond)



There is 'Legend of Otane' related to 'Tanegaike pond' which have long been familiar to local residents. This legend is about a girl called 'Otane', who served a millionaire of Miyanoshita (Miyanoshita, Kokufu-town, Tottori City). She transformed into serpent to pick up persimmons. 'Benzaiten' who is Japanese Buddhist goddess of water is dedicated to the Oshima Island of north coast of pond.

⑤Shallot Fields



Fukube Sand Dunes (part of Tottori Sand Dunes) are popular shallot fields in Japan. When the shallot flowers bloom in late October and early November, the shallot fields look like a beautiful, vast and purple carpet.

⑥Gorinto Pagodas (A group of five-level stone pagodas)



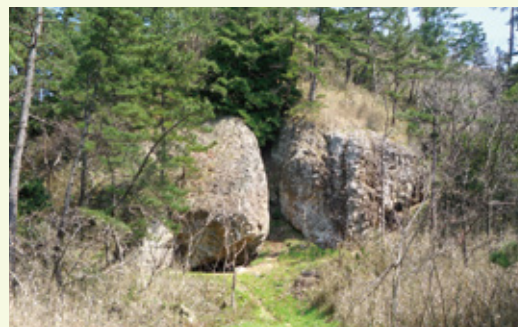
The local residents have long been familiar to the legend of big villages known as 'Yuyama Sengen and 'Tane Sengen' located in the back of the sand dunes around the Middle Ages. A lot of Gorinto Pagodas gathered from the ground of sand dunes proves that the legend is real.

⑦Yanaga Shrine



This shrine is dedicated to the Empress Jingu. Her ship called at the nearby port at the Sankan Intervention.
*1 Empress Jingu: A legendary Japanese empress who ruled beginning in the year 201
*2 Sankan Intervention: According to Nihon Shoki, Japanese history literature, she invaded Korean Peninsula. But, no remaining evidence has been found.

⑧Mt. Hitotsu Sea Cave



During the beginning of Jomon period (12,000-2,400), this location was a shorefront and the waves of transgressing sea carved out this old cave. When the sea receded, the recent sand dunes were formed.

Recommend: Gihan Syukuin Monument of Honor



Reclamation of Yuyamaike Pond at the south of Fukube Sand Dunes started in 1859. One of local residents, 'Giha Syukuin' have planned this business. He landfilled Yuyamaike Pond and conducted irrigation of sand dunes farmland by constructing waterway in Tanegaike Pond.

Recommend: Sukunami Site



It was discovered in 1946 and conducted excavation and research both 1955 and 1976. A lot of earthen-ware from the beginning of Jomon period (7,000-5,500) to the Kofun period (mid 3rd century-end of the 7th century) are discovered by this excavation. It is said that the southern part of Fukube Sand Dunes around Lake Koyama has been a place where people have lived.

Geo-Column①

Development of Sand Dunes Shallot

New rice fields were actively developed in sand dunes area during Edo period (1603-1868). But, the development became very behind for the severe wind-blown sand and difficulty getting enough water because sand dunes in Fukube town is hill at 70 meters above sea level.

In 1914, Yomozou Hamamoto succeeded in growing shallot in sand dunes in Fukube town. In 1917, *Jinzou Sasaki and other members worked very hard to expand cultivation area through afforestation for sand control and organize of industrial association.

In 1963, this sand dunes are developed as one of the most famous shallot fields in Japan by risk management of the rough farmland on the slope, farm road pavement and utilizing machine and truck.

In the present, sand dunes become good place for tourism and sports event such as 'Shallot Flower Marathon' and 'Shallot Flower Fair' when flowers bloom in late October and early November.

* Jinzou Sasaki: Pioneer of farmland development (1866-1954)



Geo-Column②

Origin of Tanegaike Pond Formation and Reclamation of Yuyamaike Pond

Tanegaike Pond was formed when the sand dunes blocked the water running from the valleys. At the present time, Oshima island of north shore is connected by land with deposited sand. But, the Oshima island is drawn as isolated island in old map and the literature of Edo period (1603-1868). Former Tanegaike Pond seems to be bigger than the current ones. Reclamation of Yuyamaike Pond at the eastern part of Tanegaike Pond started in 1859. Giha Shukuin decided to save farmers by afforestation, reclamation of Yuyamaike Pond and developing new rice paddies. At that time, farmers were being in trouble due to the rice paddies and farmlands damaged by wind-blown sand. He made plans to reclaim Yuyamaike Pond by sands flowing to the water current through tunnels because water level of Tanegaike Pond is about 16 meter higher than the one of Yuyamaike Pond. Until 1871, 50 ha has been reclaimed.



Quiz-Answer

①Sand from old sand dunes

②The island is called 'Whale Island'.

At the time of high wave, this island looks like whale blowing. (Another name is 'Turtle Island')

Production

The San'in Kaigan Geopark Promotion Council & Research Section for Geo-environment, Institute of Natural and Environmental Sciences, University of Hyogo